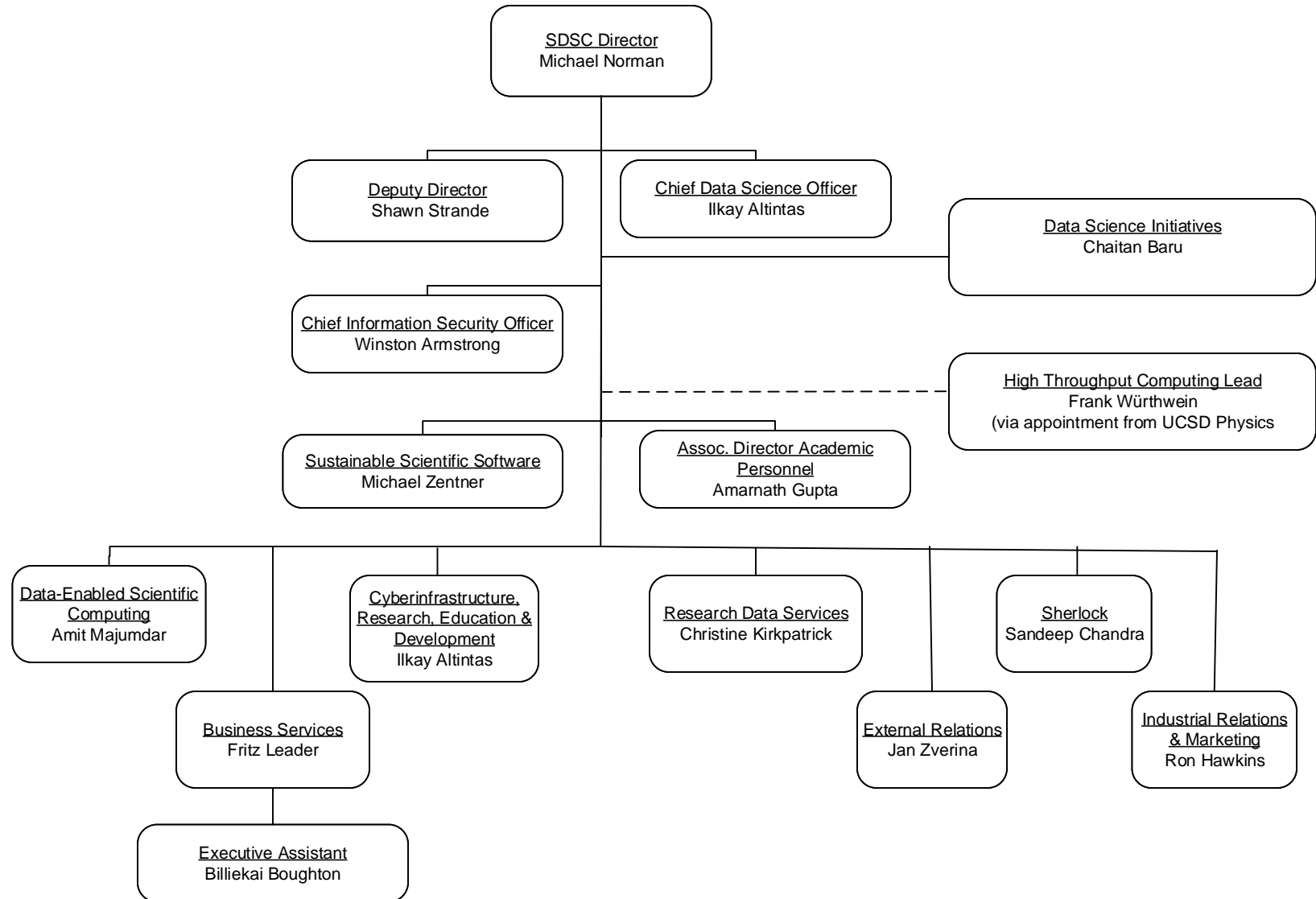
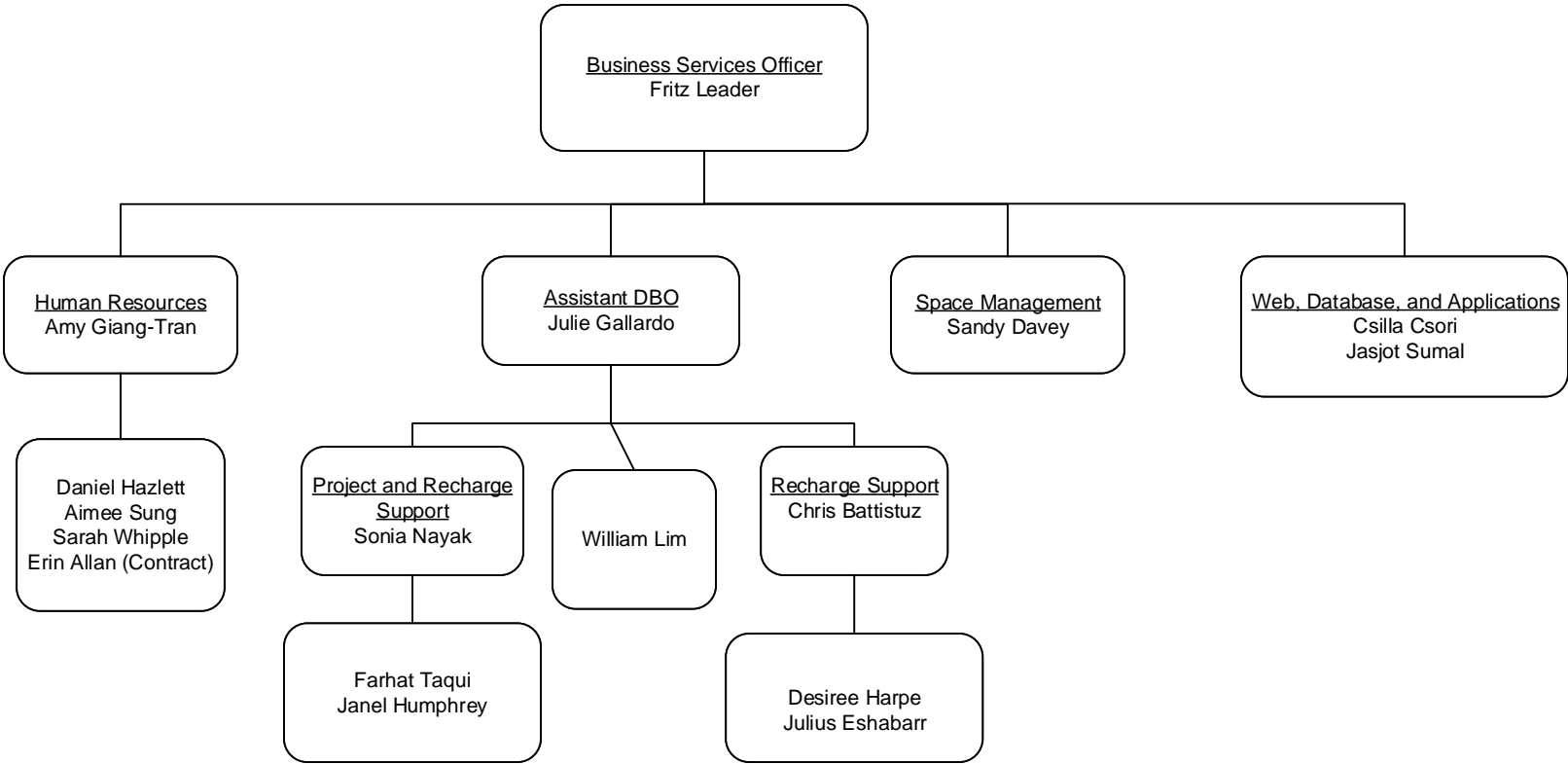


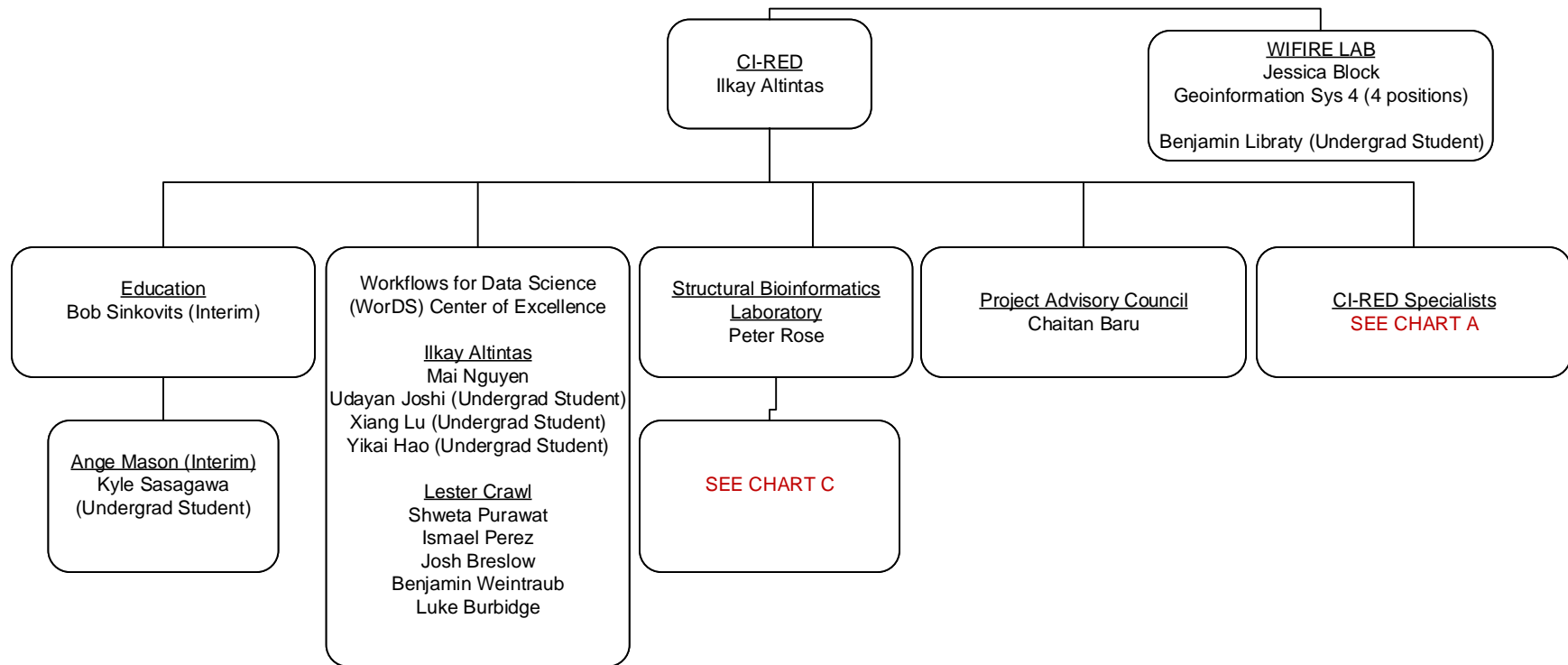
Office of the Director



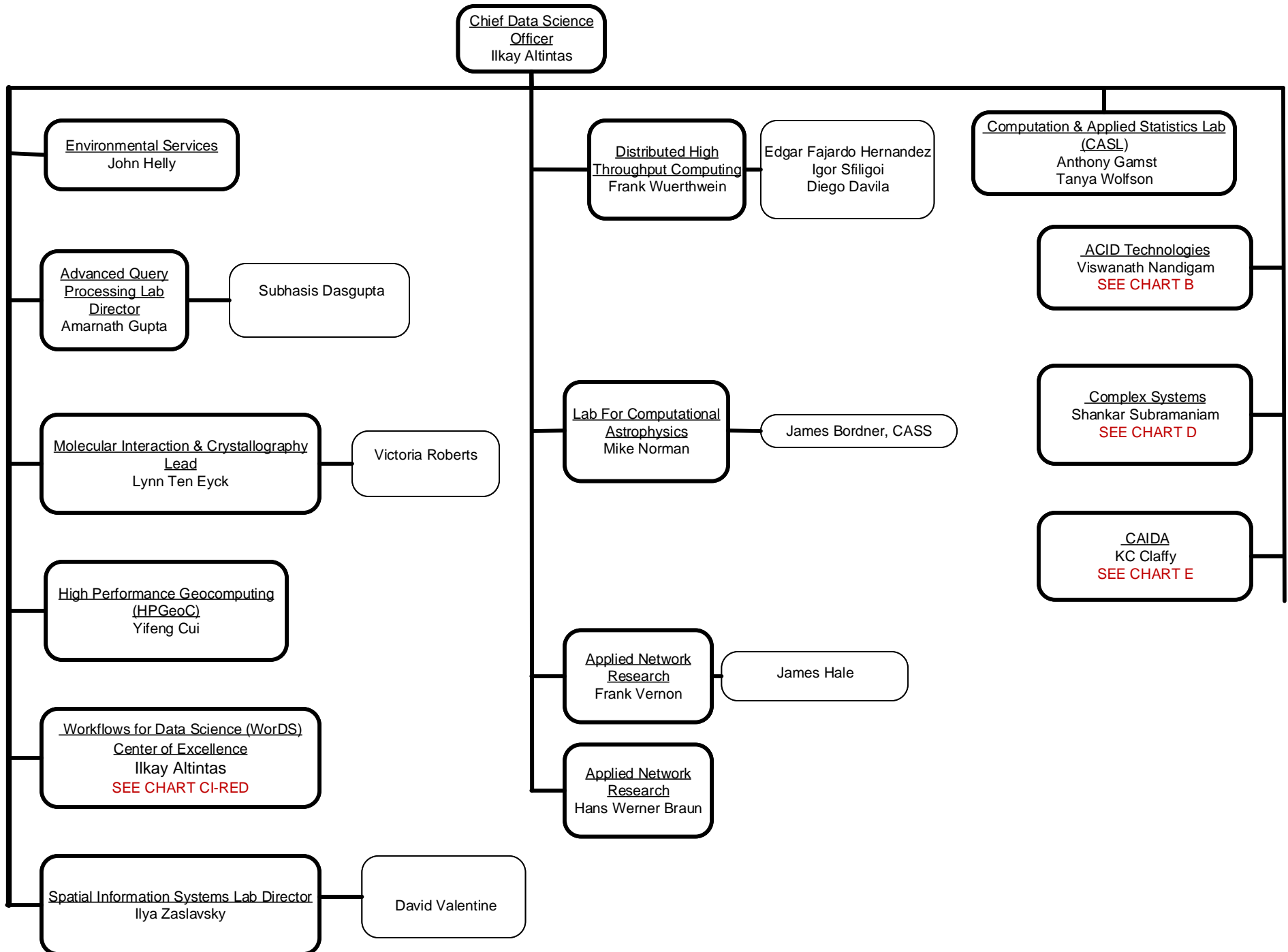
Business Services



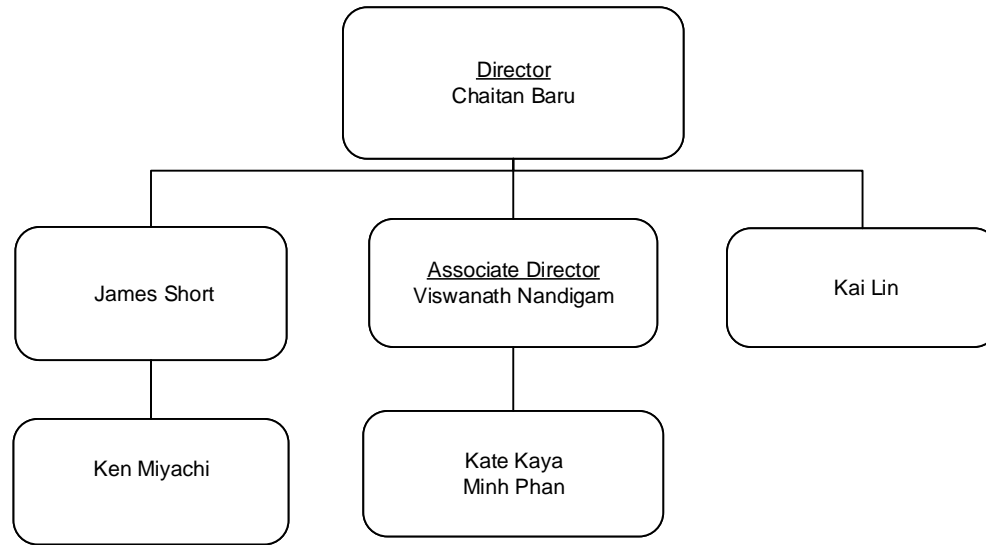
Cyberinfrastructure Research, Education and Development (CI-RED)



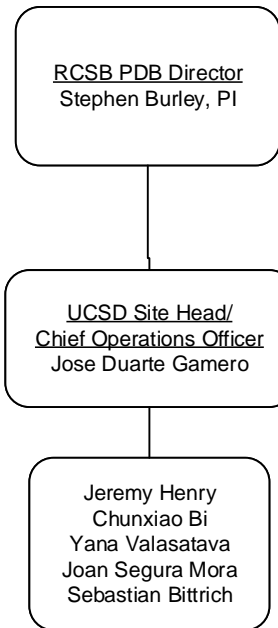
CI-RED Specialists (A)



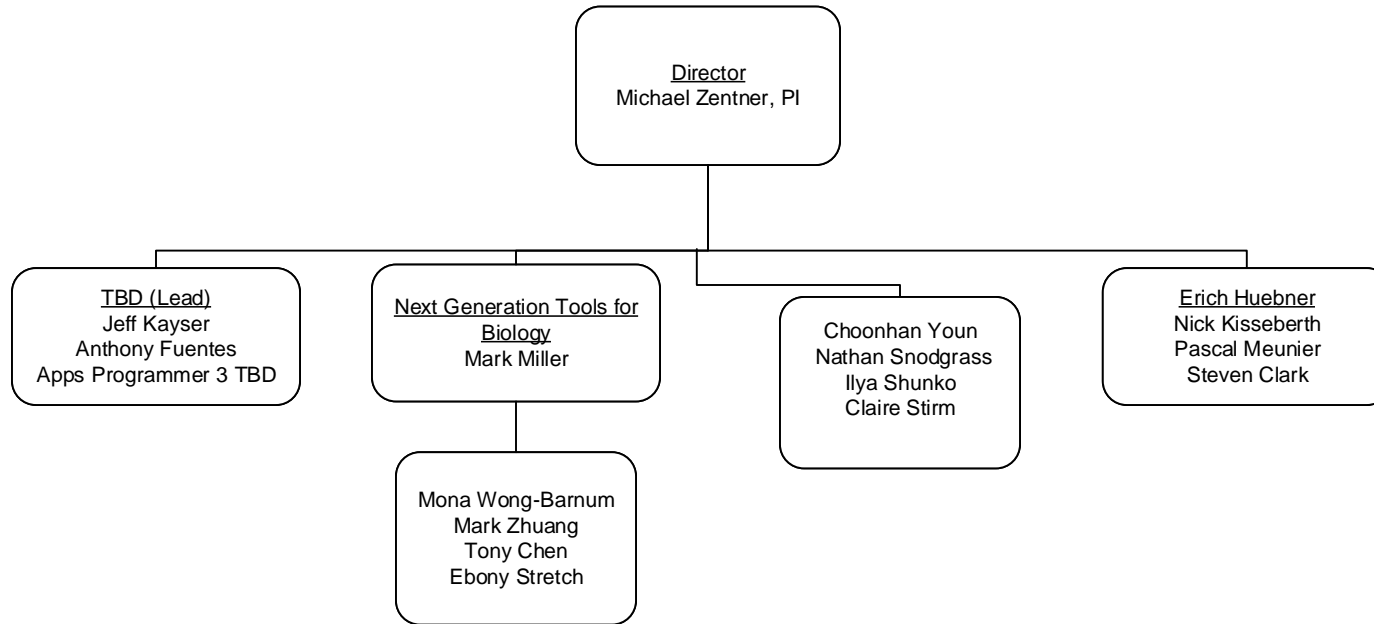
Advanced Cyberinfrastructure Development Group - ACID (B)



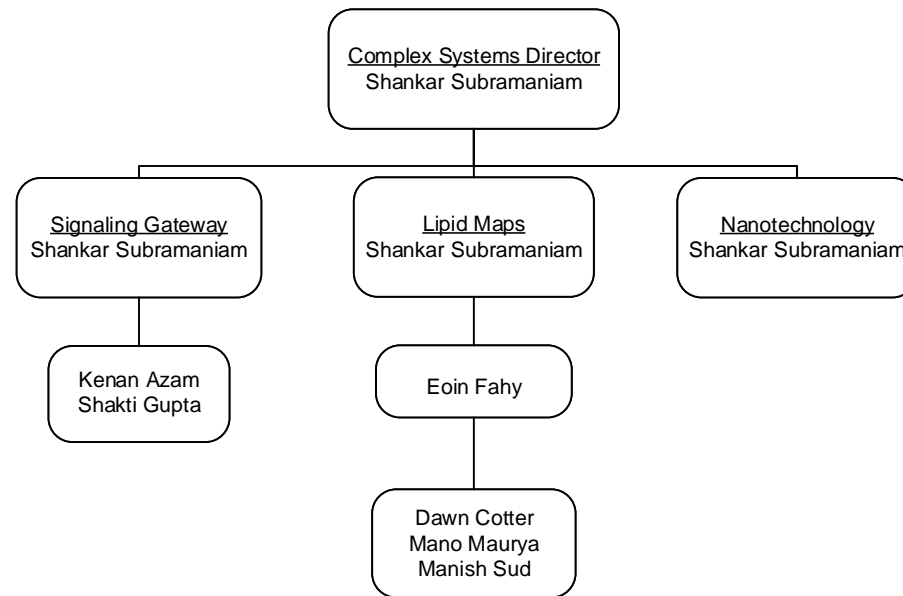
CI-RED Specialists: Structural Bioinformatics (C)



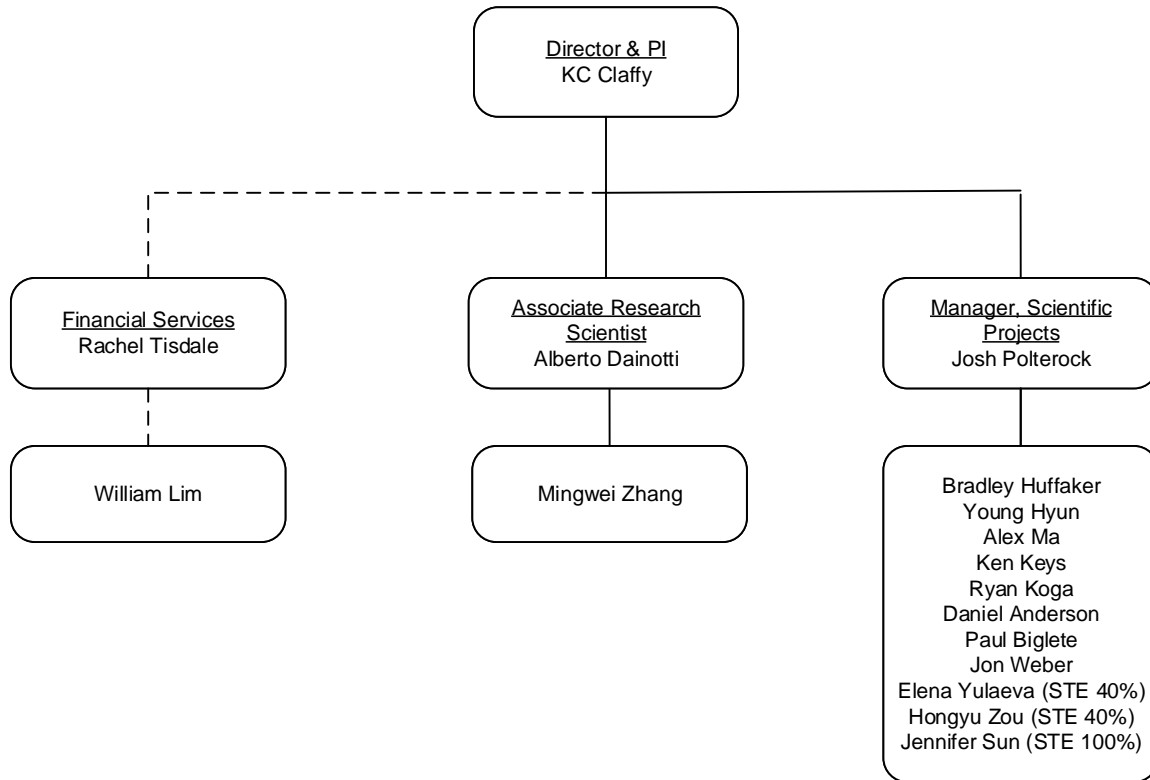
Sustainable Scientific Software (S3)



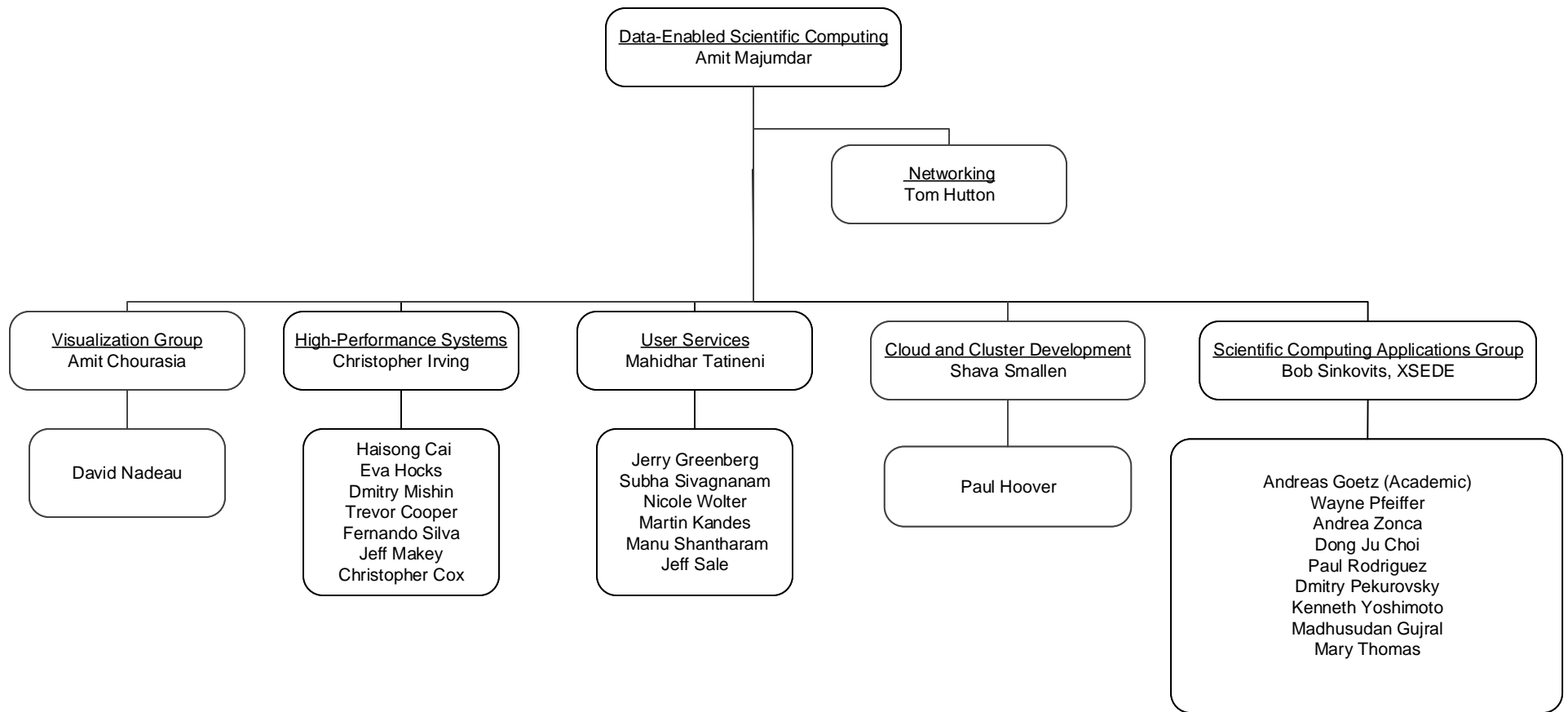
CI-RED Specialists: Complex Systems (D)



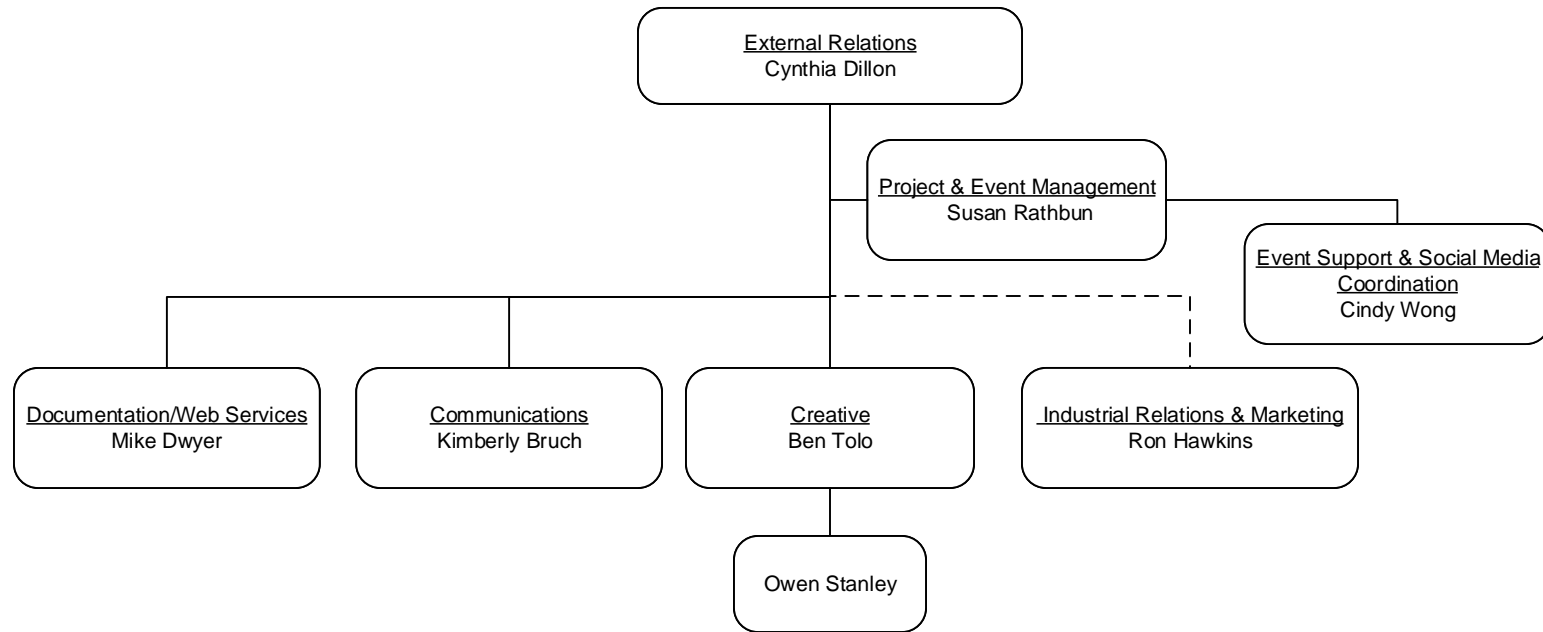
CI-RED Specialists: CAIDA (E)



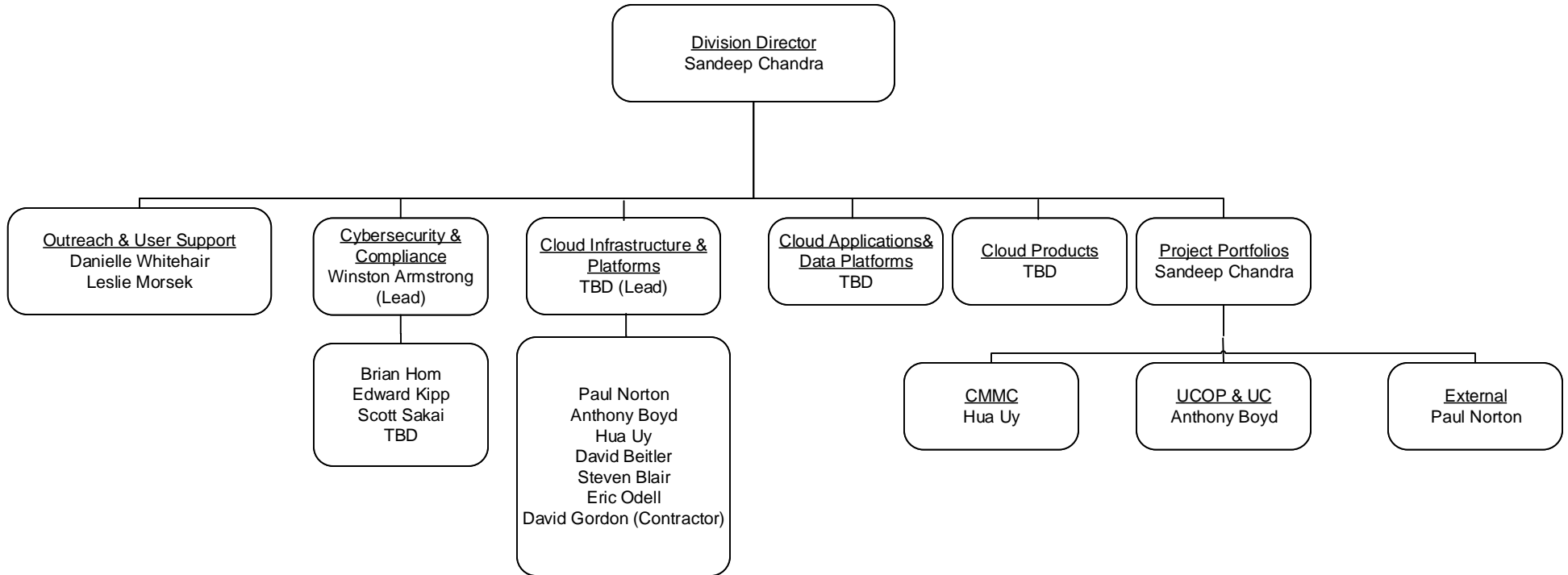
Data-Enabled Scientific Computing



External Relations



Sherlock



Research Data Services

